



Esperance Cleanup and Recovery Project Update

28 October 2011

Matt Devenish, A/Project Director

Issue 25

Project snapshot

The bulk of cleaning is expected to be completed in December 2011. A validation audit will soon be undertaken to provide an independent and scientific assessment of the thoroughness of the ECRP sampling and cleaning operations.

Key project outcomes

The key project outcomes to the end of September are as follows:

	<u>Aug</u>	<u>Sep</u>	<u>Total</u>
Total number of premises sampled	43	75	2111
Total number of samples sent to ChemCentre for testing	2848	4201	100,771
Total number of premises analysed against the ECRP guidelines	39	90	1948
Total number of premises requiring some form of cleaning	28	45	1670
Total number of premises cleaned, validated and closed	102	173	1106

Sampling and analysis

The sampling gap analysis is now complete and the ECRP has contacted all owners within the identified area of contamination and provided them with the opportunity to have their premises sampled. As a result, over 100 new consent forms have been received and the sampling team is working at full capacity to complete the sampling in a timely manner.

Railway catchment dam

Following an extensive sampling and mapping exercise, the cleanup of Wireless Hill Railway Dam catchment area commenced in mid-October. The catchment area overlooks the port (see map below) and is essentially a large rock face with man-made gutters to channel rainfall into the dam. Some of the soil that has accumulated in the many gutters and natural depressions in the rock face has been found to exceed the ECRP guidelines and will be removed.





Given the nature of the terrain and the weather conditions likely to be encountered, a detailed job hazard analysis was undertaken as an integral part of the planning process prior to the commencement of work. Preparation for the work included the refinement of already established soil removal procedures, manual handling training and a briefing from Esperance Shire Rangers on how to avoid snakes plus first aid procedures in the event of a snake bite or bee sting.

The work is labour intensive and involves using shovels, brooms and small hand tools to load the waste into bags and transport the bags to the temporary storage facility at Wylie Bay. Once the catchment and spillway areas are cleaned, sludge that has accumulated in the sump of the actual dam will be also be removed. All waste is transported to processing facilities outside of Esperance.

Cleaning summary

It is anticipated that the bulk of the cleaning will be completed by December 2011. Since the completion of the gap analysis, however, there are more premises to be sampled and some limited cleaning and validation will continue into early 2012. The challenge for all cleaning teams now is to maintain a continuous program of work for their staff despite the decreasing scope of work. The overall performance of each contract to date is summarised in the table below:

NUMBER OF PREMISES CLEANED	REVISED TARGET	AUG	SEP	TOTAL	% COMPLETE
Roof spaces and replacement of insulation	450	11	21	361	80%
Roof surfaces, gutters, rainwater tanks, etc	1060	8	-	1044	98%
External and internal surfaces and carpets	1600	113	61	1322	83%

Sentinel monitoring

The ECRP sentinel monitoring program was established in November 2010 as a two-year sampling program to ensure that the clean-up operations have been effective and to identify if recontamination is occurring. There are nine homes involved in the program and at each home there are three dust collection devices. Every three months, these devices are collected and analysed. The most recent results are showing the following trends:

- There are no detectable levels of nickel or lead in any living areas;
- There were no detectable levels of nickel in any roof space but two sites returned very low lead readings (the levels were approximately 500 times less than the pre-cleaning readings); and
- All homes recorded traces of nickel and lead in the external monitors, with nickel being slightly higher near the rail and port. The lead samples underwent further isotopic or "fingerprint" testing and those results reveal that the source of lead is not Magellan but some other, commonly occurring source.

Validation audit

The Esperance Cleanup and Recovery Project was established to do exactly what its name implies; to clean up lead and nickel contamination where it is found to be above accepted guidelines in the town of Esperance, in order for the town to recover from the contamination.

The ECRP is in the process of engaging an independent, external consultant to conduct a validation audit with the purpose of assessing whether the ECRP is conducting a thorough



and comprehensive cleanup. The validation report is required to provide assurance to the Esperance community that the cleanup has been carried out in accordance with 'best practices', and to fulfil the requirements of the Deed of Settlement between the State of WA, the Esperance Port Authority, Magellan Metals and its parent company Ivernia.

The validation audit provides an independent and scientific assessment of the thoroughness of the ECRP cleanup and is an essential closeout report for the Esperance community.

Health, safety and environment

There were two separate incidents in the last period. The first one was a bee sting that required first aid treatment and the second was a cut that required stitches. The cut resulted in lost time but the employee has now fully recovered. Both incidents triggered the implementation of new controls to reduce the potential for either to occur again.

The ECRP recently engaged a senior safety and health consultant from IFAP Safety Solutions to conduct workplace inspections, provide safety leadership for the team and ensure compliance with health and safety legislation.

The sampling team continue to conduct morning stretching exercises to help reduce the potential for soft-tissue injuries. There have been no workplace related soft-tissue injuries in the sampling team since the introduction of these exercises.

Representation at the Esperance Agricultural Show

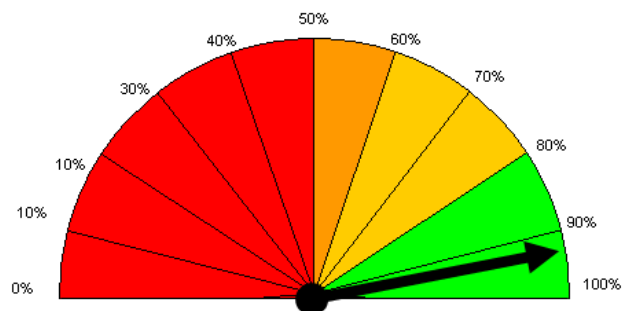
The ECRP attended the 2011 Esperance Agricultural Show. Project information was provided to the community through a static display, brochure handouts and a physical presence by key ECRP personnel. Thanks again to community members of the Steering Committee who gave up their time to attend the display and answer questions from the public. The feedback was generally good and the community sentiment reflected satisfaction that the ECRP was making positive progress in regard to the cleanup of the town site.

Blood lead level tests

The ECRP is offering free blood lead level tests to community members who were involved in the project. If any cleaning was conducted at your premises, then there needs to be at least a three month gap between the cleaning and any blood lead testing. If you have not previously taken up the offer but would like to, please feel free to call the ECRP office on 9072 3900 to organise the testing.

Community feedback

The ECRP issues a client satisfaction survey to each client at the conclusion of sampling (if no cleaning was required) or when the cleaning is complete. Responses are sought on a range of issues including clients' impressions of the staff conducting the work, clarity of the results and suggestions for improvement. To date, owners and occupiers at **1206** premises have been surveyed and **26 per cent** of those clients have responded. The chart opposite summarises all responses received to date.



Overall Client Satisfaction Rating



Map showing where some cleaning has been conducted to date



www.uncue.org.au

Visit the OnCue website to view previous
Project Updates and other related ECRP information.

Unit 2b 113 Dempster Street, Esperance WA 6450
Telephone: 9072 3900